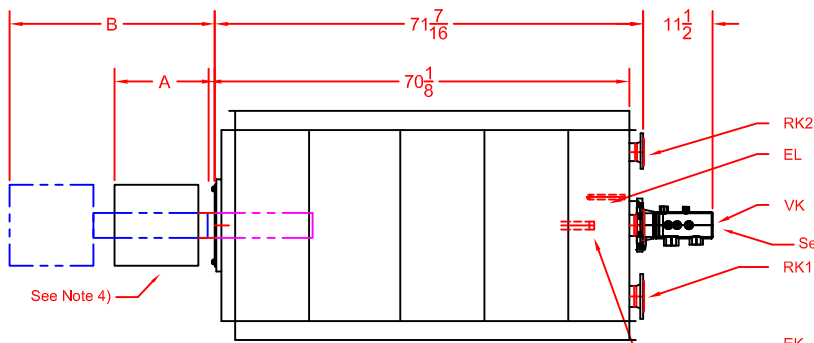
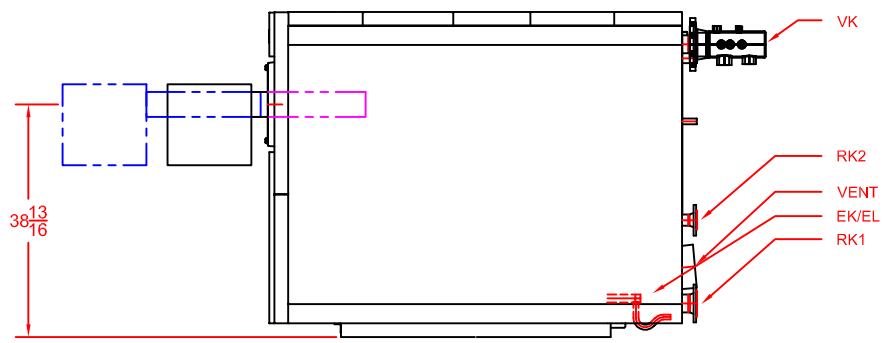


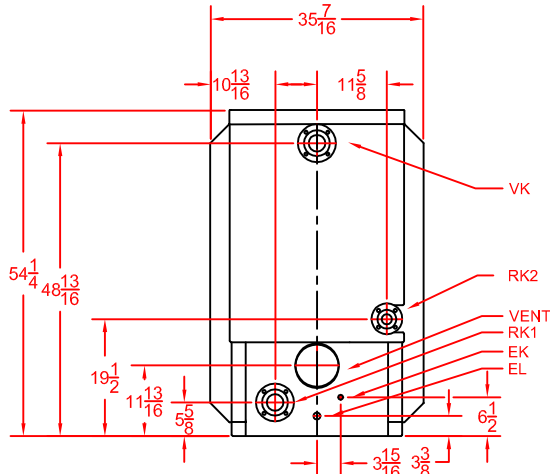
REVISIONS			
REV	DESCRIPTION	DATE	APPROVED
A	Released	5/12/2009	



PLAN VIEW



SIDE VIEW



REAR VIEW

SB615-185 KW (612 MBh)					
Make	Riello	Power Flame	Beckett	Power Flame 20 ppm	
Model	40G900	J15A-10	C1-G-10	CG10.4S	NP2-G-63
A	15 5/16	22 1/4	30 7/8	18 1/2	38 1/8
B	25 15/16	25 1/4	34 1/8	25 1/2	48 3/8

Legend		
ABR.	Name	Size
VK	Supply	2 1/2
RK1	Return 1	2
RK2	Return 2	2
EK	Condensate Drain	3/4
EL	Boiler Drain	1

NOTE 1. 'A' Dimension is to the back of the burner.  
 'B' Dimension is the extraction dimension.

2. All dimensions are in inches.  
 3. Manifold provided, field assembly required.  
 4. Burner shipped separately; field assembly required.

Bosch Thermotechnology Corp.  
 50 Wentworth Ave.  
 Londonderry, NH 03053  
 Phone: 603-552-1100

Tolerance

Fraction=±1/4"  
 x.x=±0.030  
 x.xx=±0.015  
 x.xxx=±0.005

(UNLESS OTHERWISE NOTED)

This drawing is the exclusive property of Bosch Thermotechnology Corporation, it may not be reproduced or given to third parties.

Drawn By:  
 M SPIRIDIGLOZZI

Approved By:  
 J MILLS

**Buderus**  
 Bosch Group

Bosch Thermotechnology Corp.

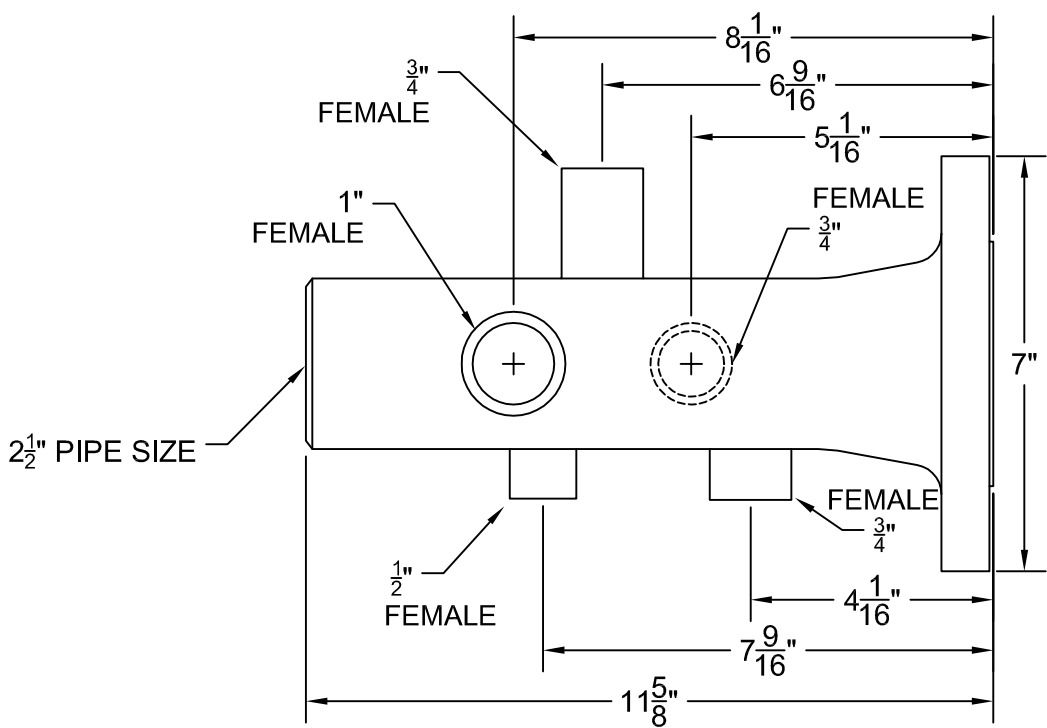
DESCRIPTION  
**SB615-185 BOILER BURNER SPECIFICATION**

SIZE	SCALE	PART NO.	REV.
A	3/8" = 1'	BTC 433006102	A

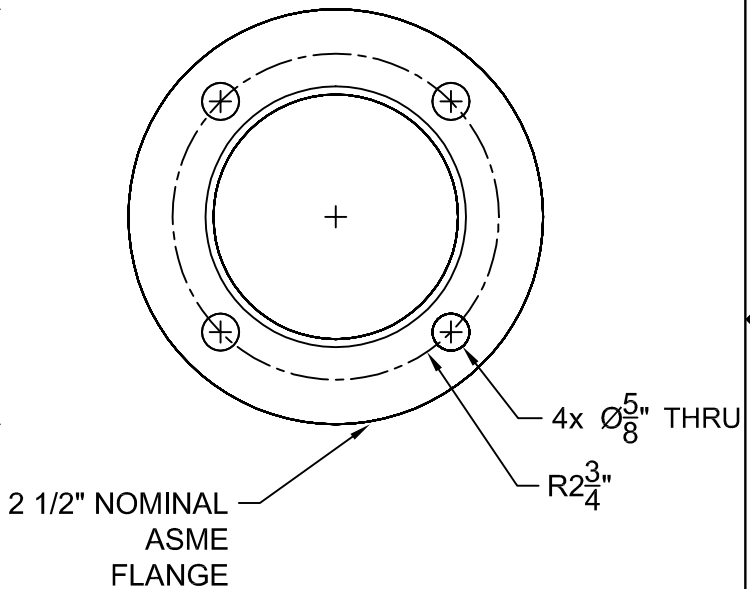
DATE 4/2/2009

SHEET 1 of 1

REVISIONS			
REV	DESCRIPTION	DATE	APPROVED
A	RELEASED	6/12/2009	



**SIDE VIEW**



**END VIEW**

NOTE  
 1. All dimensions are in inches.  
 2. All pipe sizes are NPT.

Bosch Thermotechnology Corp.  
 50 Wentworth Ave.  
 Londonderry, NH 03053  
 Phone: 603-552-1100

Tolerance  
 Fraction = ± 1/4"  
 x.x = ± 0.030  
 x.xx = ± 0.015  
 x.xxx = ± 0.005  
 (UNLESS OTHERWISE NOTED)

This drawing is the exclusive property of Bosch Thermotechnology Corporation, it may not be reproduced or given to third parties.

Drawn By:  
 M SPIRIDIGLOZZI

Approved By:  
 J MILLS

<b>Buderus</b>		Bosch Thermotechnology Corp.	
Bosch Group		DESCRIPTION	
SB735/145-185 2 1/2" SUPPLY MANIFOLD SPECIFICATION			
SIZE	SCALE	PART NO.	REV.
A	NTS	BTC 433006112	A
DATE 6/9/2009		SHEET 1 of 1	